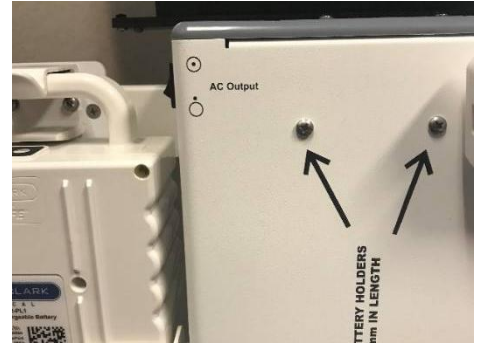


QUICK START GUIDE

MTC-AVON24

STEP 1

- Locate power supply switch (AC Output) and press switch towards top to enable:



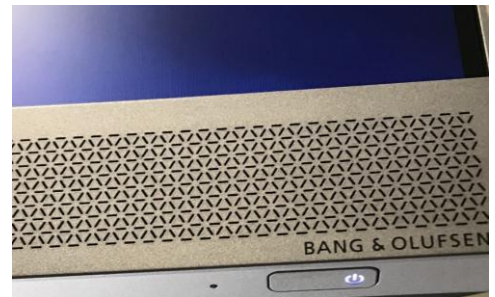
STEP 2

- Locate power control panel and press power button until display lights up:



STEP 3

- The computer should now power on. If the computer does not power on please press the power button located on the bottom right side of the display:



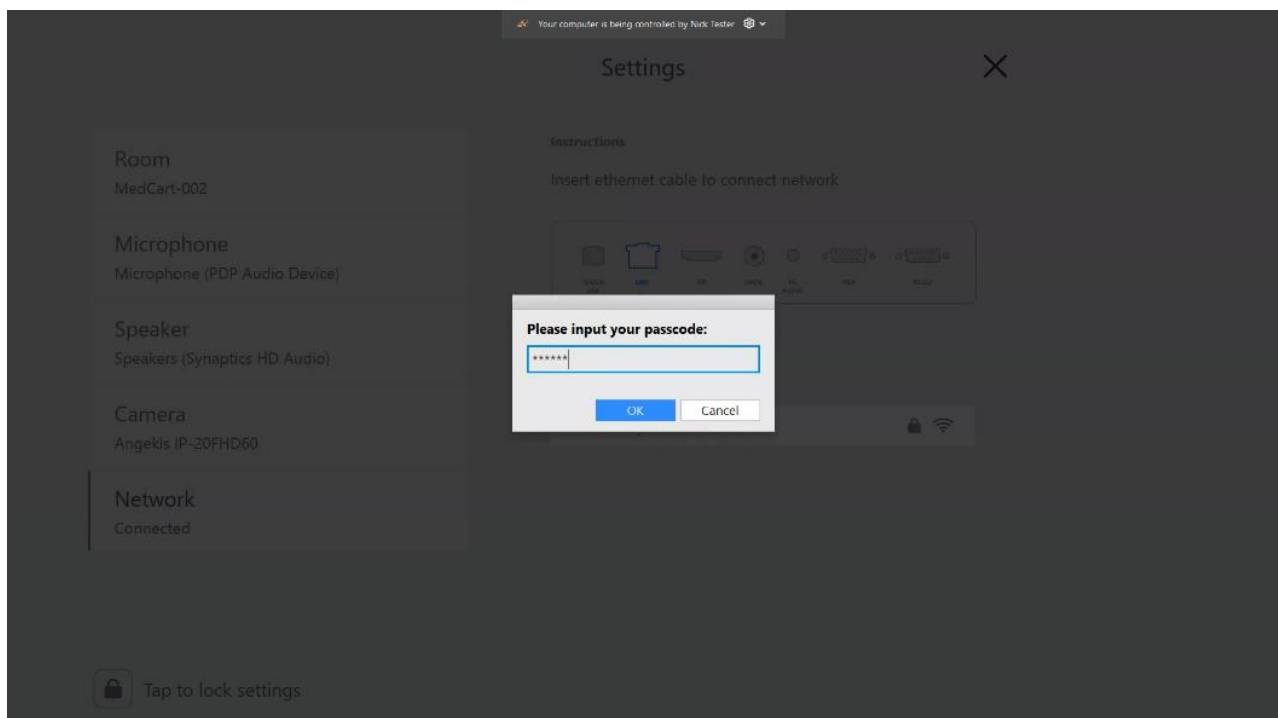
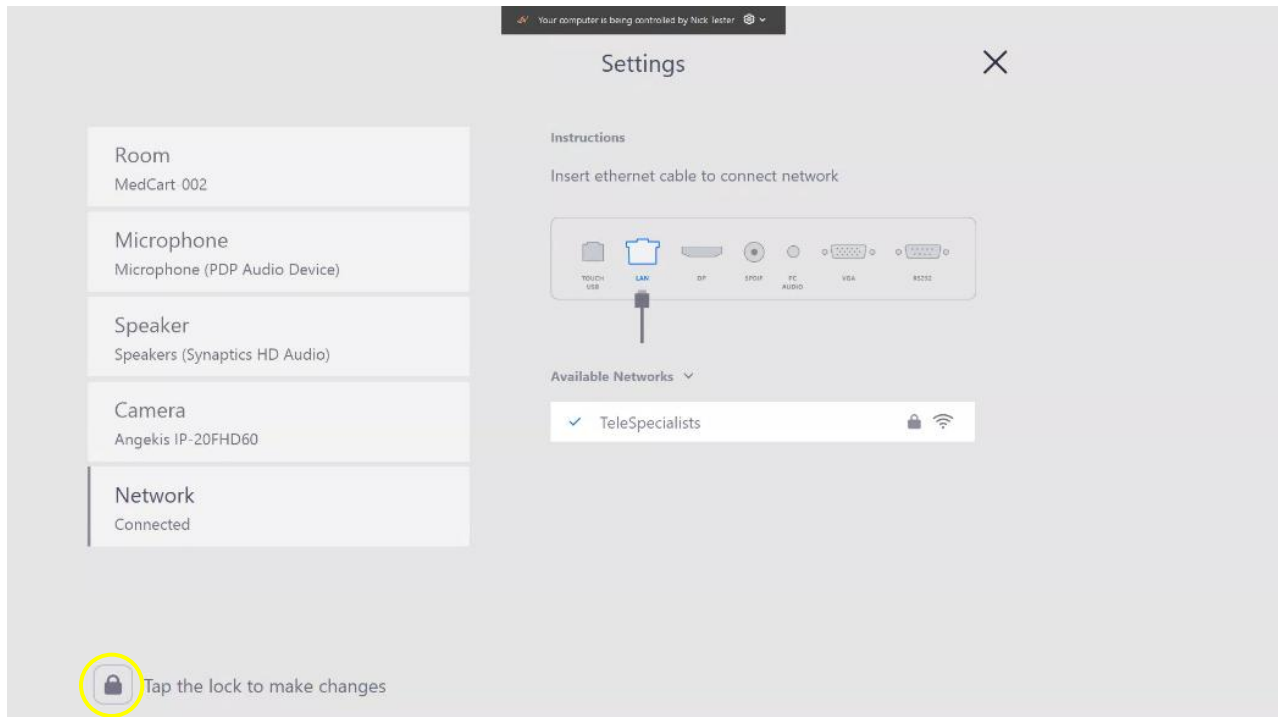
STEP 4

- Once the computer is powered on and the zoom screen is displayed you are now ready to connect to a wireless network. Touch the screen to enable the settings button. Now press the settings button:



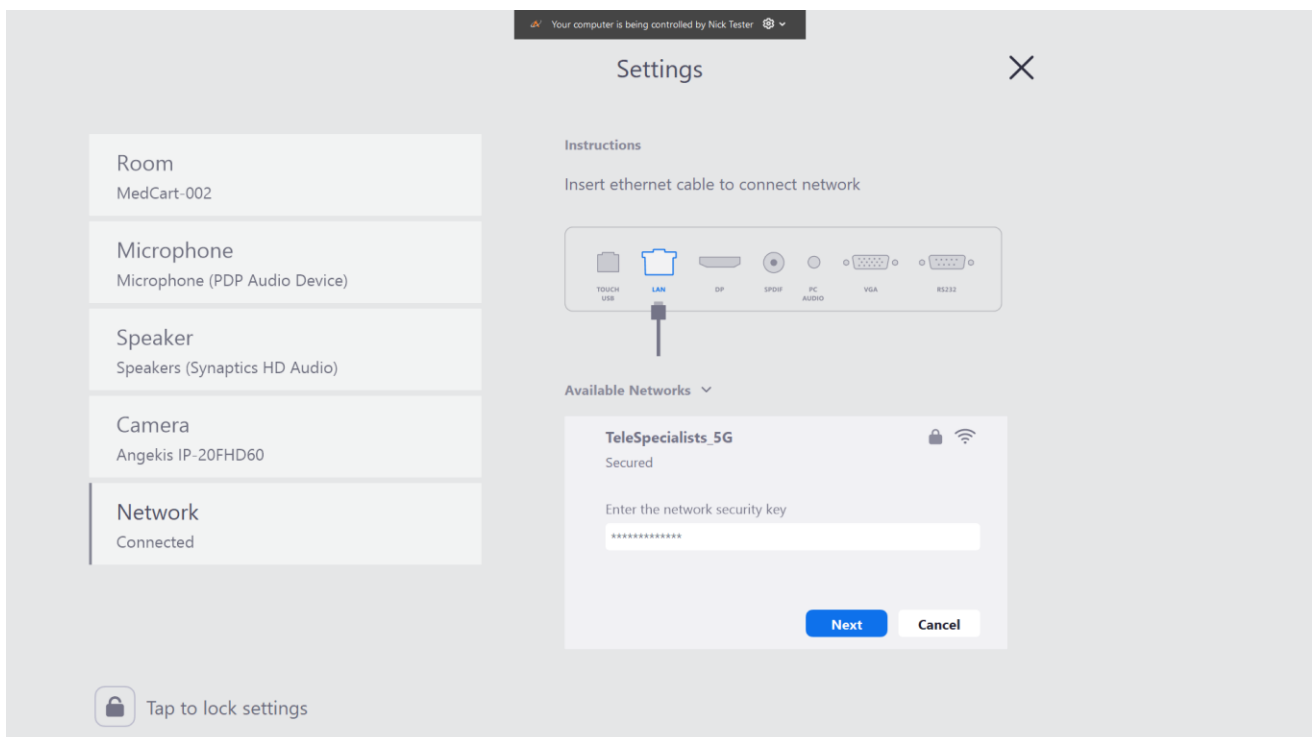
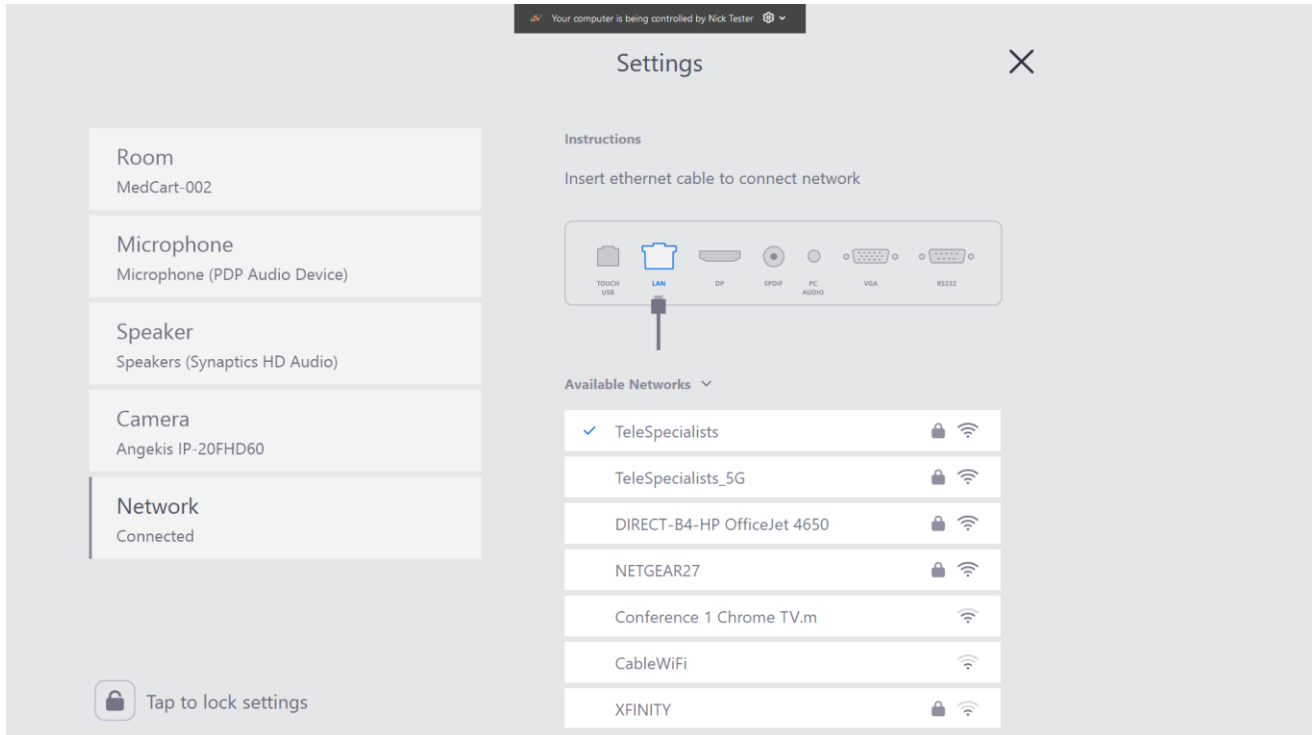
STEP 5

- At this screen press the lock icon in the lower left and enter the passcode. The default passcode is 123456:



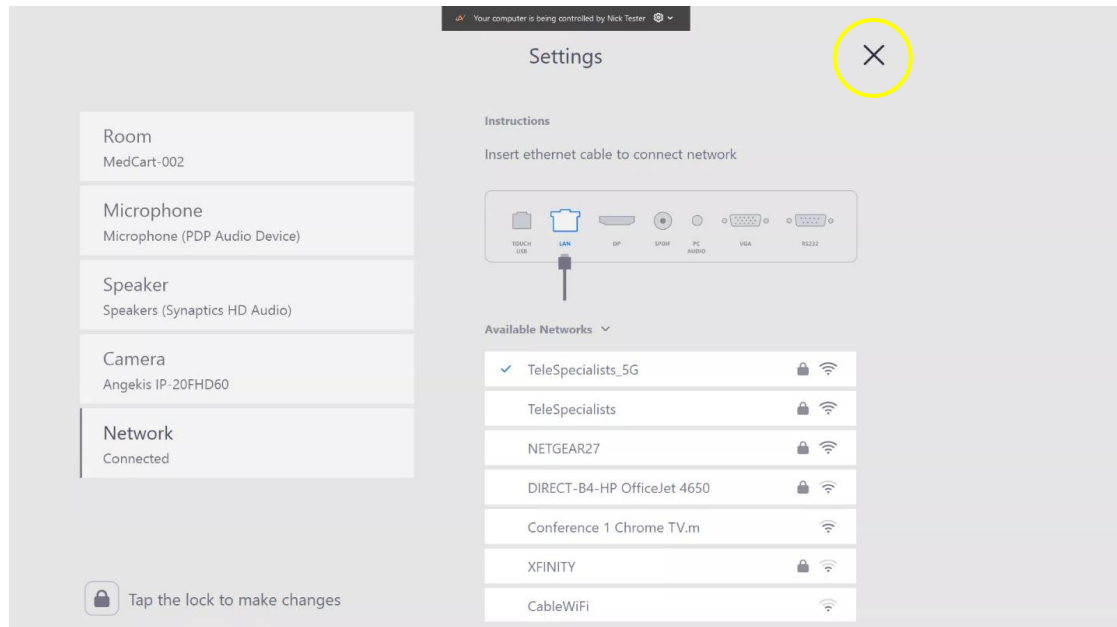
STEP 6

- You may now select your network from the list of available networks , enter your credentials and select next:



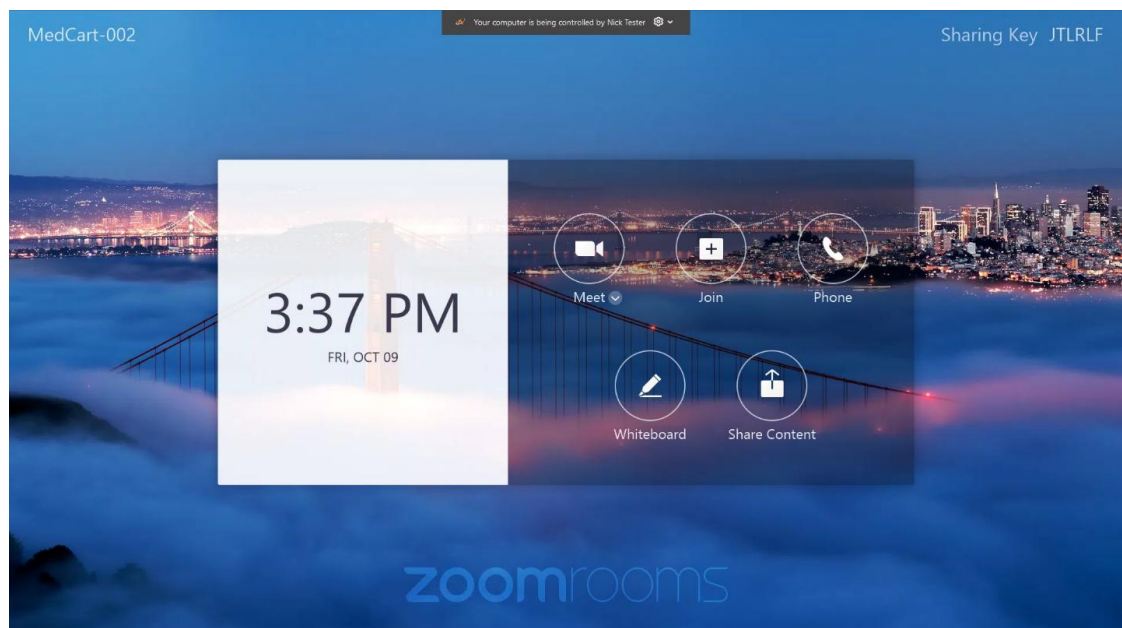
STEP 7

- When finished press the lock in the lower left corner of the screen. You may now press the “X” in the upper right to close the settings:



STEP 8

- You should now return the main screen and your cart is ready to use with Zoom.



MOBILE TELECARE SYSTEMS

1598 NW 108 Ave.

Miami, FL. 33172

Customer Service & Technical Support:

305-984-9546

www.mtcsusa.com